

System Features

◆Unique 3-D features

- L Geo-tagging, 3D measurement, integration with other networking sites.
- L Bird eye view for quicker access of wide area coverages

◆Integration of movie and map

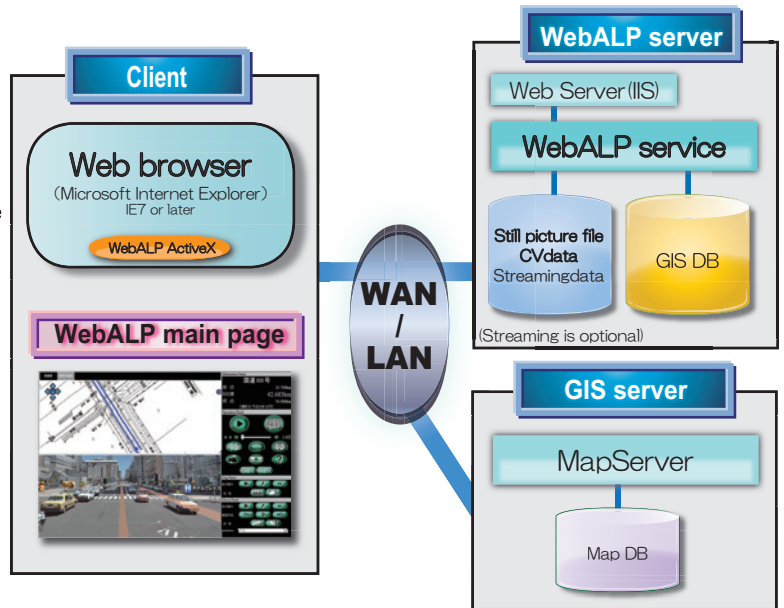
- L Complete All Surrounding Image with No Dead Hole
- L CVtag can be registered in the 360 degree video
- L Complete linkage between 2D Maps and 3D imagery
- L CVtag registered in the 360 degree video is also reflected on the 2D map
- L You can also search for CVtag

◆Combination with GEO Database

- L Can be linked to various GIS and social networking sites (Twitter, facebook and other SNS also supports)

◆Web-based application

- L Can accessed via IE browser (IE7 or later)
- L Supports Intranet and Internet
- L Can be operated via mobile terminals (Android, iPhone under development)



WebALP GIS System is an application for disaster management, road maintenance services and others.

Three-dimensional movie and Map



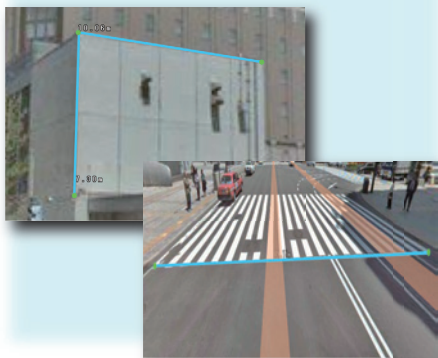
Inserting the CVtag and CG inside the movie

Arbitrary Tagging in the 3D space

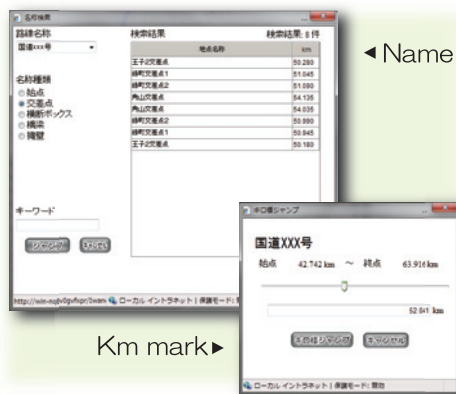


3D Measurement in the movie

Measurement function of distance, height, surface, inter-frame



Km mark and the name search feature



Printing in different layouts

