

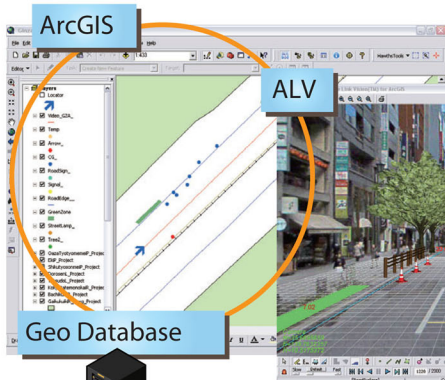
ALV™ Active Link Vision™ for ArcGIS®



CV stands for Camera Vector.
This technology is the core
of ALV solutions.



ESRI
Technology
AUTHORIZED
BUSINESS PARTNER



Bring Real World To Your Desktop.

Users can register, retrieve, manage and view information inside ALV. Just like a copy of real world on desktop or online.



"ALV" is an independent software and also works as an extension/ Plug-in for ArcGIS and ArcGIS Server. Highly interactive and close linked with Arc GIS. Flexibility to Populate GIS data using geo terrestrial video's and store in Geo database. User can perform unique features like GIS database development, 3D measurement, 3D CG composition, Geo Tagging, Search, etc. ALV is suitable for organizations in various industries such as central government, local government, real estate, financial institutions, utilities and construction.

3D Video GIS

▶ Feature Tracking



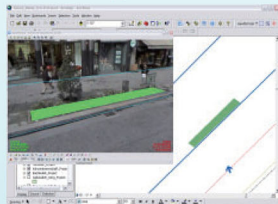
Features are extracted in each frame to derive the trajectory of camera position and posture

▶ Image Synchronization



Bottom camera can be used to populate toad inventory, visualize pavement conditions and extract road markings.

▶ Application Software



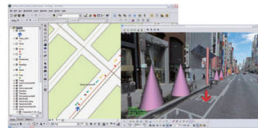
User can digitize 3D geometry like point, polyline, and polygon with 3D coordinate inside ALV for ArcGIS.

● Feature

The complete spherical (360 degree) video without any dead angle.



Close linkage of features and data between ALV and Arc GIS. The 3D geometry populated by ALV can be saved and displayed as a feature in Arc GIS.



One click calculation of 3D coordinate (Latitude, Longitude, Attitude) at any arbitrary point in the video.



3D measurement of the distance, area, slope and azimuth inside the Geo spatial video.



Insert 3DCG into the video with 3D coordinate. This is useful for panning and simulation.



Iwane Laboratories, Ltd.

[Head Quarters] +81-(0)11-643-0872
7-8-3 Maruyamanishi-machi, Chuo-ku, Sapporo, Japan
[Tokyo Branch] +81-(0)3-5550-9872

<http://www.iwane.com/en>
jpsales@iwane.com

[Iwane Thailand]
1054/14 Kitsiri Building, 3rd FL, New Petchaburi Road,
Makkasan, Ratchathewe, Bangkok 10400
Tel: +66-(0)2-655-1498-9 Fax: +66-(0)2-655-1497