

**FAST, ACCURATE AND
EFFICIENT WAY TO MAP
INDOOR PREMISES**

The Indoor Mobile Mapping Solution is a highly productive and reliable method to map all interior environments such as public venues (transportation, sporting, etc.), public buildings (hospitals, libraries, police stations, etc.) and all private buildings. Indoor Mapping can enable valuable asset management and targeted use of resources for facilities during all phases of their life cycle. Iwane Indoor Mapping can be invaluable for security and event planning to help protect people and property. Accurate information on building layout and physical surroundings enable first responders to react quickly and effectively in emergencies.

Maximize your productivity

Handy



Iwane **BACKPACK SYSTEM**

Fast
Accurate
Efficient
Reliable
Customization

Iwane
Laboratories Ltd.

7-8-3 Maruyamanishi-machi,
Chuo-ku, Sapporo Japan
TEL +81-(0)11-643-0872
FAX +81-(0)11-643-4182
www.iwane.com/en/



DELIVERABLES

- OMNI DIRECTIONAL GEOSPATIAL VIDEO
- IMAGE WITHOUT DEAD HOLE
- VIBRATION STOP IMAGE
- FLEXIBILITY FOR GEO TAGGING
- FLEXIBILITY FOR MEASUREMENT
- POPULATE LINE, POINT AND POLYGON
- GENERATE 3D COMPUTER GRAPHICS MODELS
- EXPORT MODELS TO DIFFERENT FORMATS



- 3D model of office interior

Iwane Backpack MMS System - Technology at work for you

MAP AND MESURE WHEREEVER YOU CAN!!

Iwane backpack MMS is handy and compact shooting system to capture 360 degree all surrounding geo referenced Image and build 3D CG Models. It is designed to capture the areas where the roads are inaccessible like narrow lanes. It is best suited for shooting at park, garden gold courses, mountains, and building interiors to make rich contents.

New product design which is revolutionary and connected with camera, battery, shooting PC by dedicated frame.

Can shoot at less vibration as a special support is provided to avoid much movement during the shooting.

Can continuously shoot in a row and the shooting can be continued by only changing the battery and recording media.

Has dedicated data acquisition software for MMS data acquisition with a touch screen panel. The application helps in camera settings, start recording and stop recording, etc



A TOTAL END TO END MAPPING SOLUTION.

flexible solutions for your business needs

BENEFITS

Architectural, Engineering and Construction Contractors can visualize a job with backpack MMS generated geo referenced spherical video and 3D CG Model.

Mechanical, Electrical and Plumbing professionals will gain a comprehensive view of projects.

Law Enforcement/Public Safety/First Responders benefit by acquiring total situational awareness of an indoor environment.

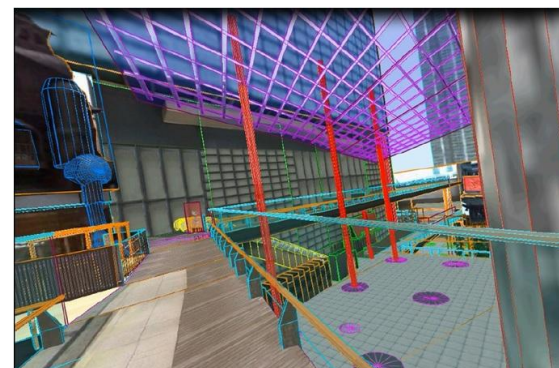
All Owners/Facility Managers

NUMEROUS TECHNICAL ADVANTAGES

- Extended range of operations.
- Able to start mission anywhere; indoors or outdoors.
- Can work with GCP's in case of indoor (need for GNSS).
- Simple and refine workflows.
- Long battery life and back up.
- Perform wide area mapping at low cost.
- Data can be leveraged with existing enterprise GIS systems.

INDOOR GEOSPATIAL VIEWS AND BUILD 3D COMPUTER GRAPHIC MODELS

360 degree geo spatial data can be imported inside the 3D PCCI (software tool) to digitize polygon and extract textures automatically.

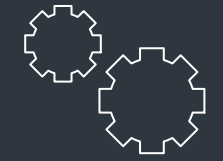


- 3D model of hotel interior

- Plant and factory facilities mapping
- High-rise office, residential, and government buildings.
- Airports, train stations and other transportation facilities mapping.
- Music halls, theatres, auditoriums and other public event spaces.
- Covered pedestrian concourses with platforms, corridors, stair locations and ramps.

The polygon and the texture can be acquired at the same time from the images. Obtain three-dimensional coordinates directly from the image by clicking a point on the image.

The detailed polygon and the textures are generated from all surrounding video image captured not only from street level imagery but also aerial imagery. The matching between the polygon and the texture is perfect. Flexibility to add external high resolution texture in the form of image



CORE ELEMENTS

Backpack consists of four core elements:

1. Camera systems designed to work indoors in mobile mode.
2. Computers and electronics for complete data acquisition
3. Data processing workflow for producing 2D / 3D floor plan maps and models.
4. Positioning System (GNSS)



WEB SOLUTIONS

The 360 degree geo imagery can be browsed using web browser like IE7, 8 x , Chrome ,etc. . It's a flash based application and web browser's need to be flash enable in order to browse 360 degree geo imagery online. One single footage / panorama is divided into many parts (using cube format) so as to browse 360 degree geo imagery even in low bandwidth..



CONTACT

jpsales@iwane.com